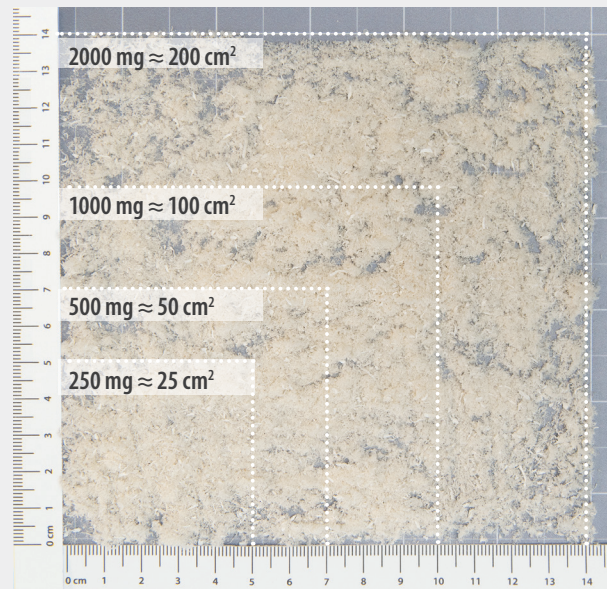




- Biocompatible acellular human placental Extracellular Matrix (ECM) derived from the placental disc
- Preserves multiple ECM components and other matrix-bound proteins
- Intended for use in replacement or supplementation of damaged or inadequate integumental tissue
- May be applied as a dry particulate or a hydrated paste

**Approximate coverage when dry**



Item #	Product Size	Approx. Dry Coverage†
PCM-0250	250 mg	25 cm <sup>2</sup>
PCM-0500	500 mg	50 cm <sup>2</sup>
PCM-1000	1000 mg	100 cm <sup>2</sup>
PCM-2000	2000 mg	200 cm <sup>2</sup>

†Coverage may vary depending on amount applied to application site



**Approximate coverage when 500 mg AXIOFILL is hydrated with various amounts of saline**

Hydrated Reference Images: 500 mg with 2 ml, 3 ml, and 6 ml saline solution added

500 mg + 2 mL saline ≈ 9 cm<sup>2</sup>



Dough

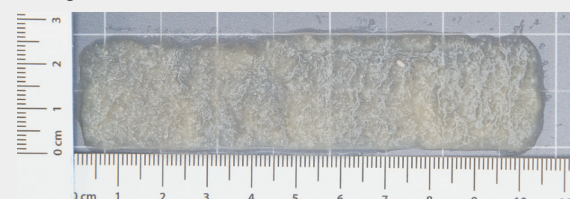
500 mg + 3 mL saline ≈ 18 cm<sup>2</sup>



Paste



500 mg + 6 mL saline ≈ 26 cm<sup>2</sup>



Slurry

AXIOFILL	Dough	Paste	Slurry
250 mg	1.0 mL	1.5 mL	3.0 mL
500 mg	2.0 mL	3.0 mL	6.0 mL
1000 mg	4.0 mL	6.0 mL	12.0 mL
2000 mg	8.0 mL	12.0 mL	24.0 mL

**VERSATILE SURGICAL SOLUTIONS**

SOLUTIONS:	AXIOFILL	AMNIOEFFECT	AMNIOFIX	AMNIOCORD
Soft tissue deficit	✓	✓	✓	✓
Large area coverage	✓	✓	✓	
Suture product in place‡		✓		✓
Easily repositioned after hydration	✓	✓		✓
Thickness desired	✓	✓		✓
Deep / tunneling, irregular-shaped defect	✓			
Minimally Invasive Surgery (MIS)		✓	✓	✓
Fenestrated			✓	

‡ Product is not load bearing

**PRODUCT ADVANTAGES**

	AXIOFILL	AMNIOEFFECT	AMNIOFIX	AMNIOCORD
Provides a protective barrier to support healing cascade		✓	✓	✓
Protects wound bed to aid in the development of granulation tissue		✓	✓	✓
Replacement or supplementation of damaged or inadequate integumental tissue	✓			
Provides a biocompatible ECM	✓	✓	✓	✓
250+ regulatory proteins <sup>1-5</sup>		✓	✓	✓
5-year shelf life	✓	✓	✓	✓
Terminally sterilized	✓	✓	✓	✓
Easy to apply	✓	✓	✓	✓
Shelf-stable*	✓	✓	✓	✓
Compatible with NPWT and HBOT	✓	✓	✓	✓

HBOT = Hyperbaric Oxygen Therapy; NPWT = negative pressure wound therapy

\* See Instructions for Use

Learn more about MIMEDX products:

☎ Customer Service: 866.477.4219

✉ Email: [customerservice@mimedx.com](mailto:customerservice@mimedx.com)

1. MIMEDX Internal Report. MM-RD-00101, Development of Lyophilized Human Amnion Chorion Membrane. 2. Koob TJ, Lim JJ, Masee M, Zabeck N, Denozière G. Properties of dehydrated human amnion/chorion composite grafts: Implications for wound repair and soft tissue regeneration. J Biomed Mater Res B Appl Biomater. 2014;102(6):1353-1362. 3. Lei J, Priddy LB, Lim JJ, Masee M, Koob TJ. Identification of Extracellular Matrix Components and Biological Factors in Micronized Dehydrated Human Amnion/Chorion Membrane. Adv Wound Care (New Rochelle). 2017;6(2):43-53. 4. MIMEDX Internal Report. MM-RD-00086, Proteome Characterization of PURION Processed Dehydrated Human Amnion Chorion Membrane (DHACM) and PURION Plus Processed Dehydrated Human Umbilical Cord (DHUC) Allografts. 5. Bullard JD, Lei J, Lim JJ, Masee M, Fallon AM, Koob TJ. Evaluation of dehydrated human umbilical cord biological properties for wound care and soft tissue healing. J Biomed Mater Res B Appl Biomater. 2019;107(4):1035-1046.

**ADVANCED PLACENTAL-BASED ALLOGRAFTS  
SURGICAL PORTFOLIO**

**MORE OPTIONS. VERSATILE SOLUTIONS.**



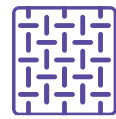
AMNIOEFFECT

AXIOFILL<sup>®</sup>  
ECM PARTICULATE

AMNIOFIX<sup>®</sup>

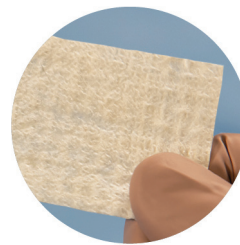
AMNIOCORD<sup>®</sup>

**THIN SHEETS | THICK SHEETS | PARTICULATE & PASTE**

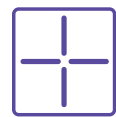


# AMNIOEFFECT®

- Lyophilized human amnion, intermediate layer, and chorion membrane allograft
- Provides a barrier that supports the healing cascade
- Biocompatible ECM and 300+ regulatory proteins<sup>1</sup>

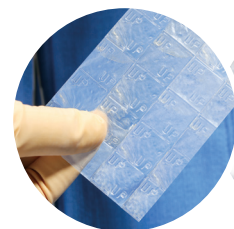


ITEM #	SIZE & DESCRIPTION	ITEM #	SIZE & DESCRIPTION
LS-5230	2 cm x 3 cm sheet	LS-5212	2 cm x 12 cm sheet
LS-5350	3 cm x 5 cm sheet	LS-5680	6 cm x 8 cm sheet
LS-5440	4 cm x 4 cm sheet	LS-5616	6 cm x 16 cm sheet
LS-5460	4 cm x 6 cm sheet	LS-5920	9 cm x 20 cm sheet

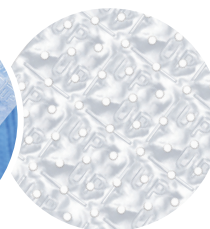


# AMNIOFIX®

- Dehydrated human amnion/chorion membrane allograft
- Provides a barrier that supports the healing cascade
- Biocompatible ECM and 300+ regulatory proteins<sup>2-4</sup>
- The fenestrations on the AMNIOFIX Fenestrated product allow for the transfer of exudate



Sheet



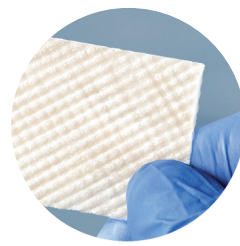
Fenestrated

ITEM #	SIZE & DESCRIPTION	ITEM #	SIZE & DESCRIPTION
APS-5160	16 mm disc	APS-5990	9 cm x 9 cm sheet
APS-5230	2 cm x 3 cm sheet	APS-5616	6 cm x 16 cm sheet
AAS-5330	3 cm x 3 cm sheet	APS-5915	9 cm x 15 cm sheet
APS-5260	2 cm x 6 cm sheet	APS-5920	9 cm x 20 cm sheet
APS-5440	4 cm x 4 cm sheet	AH-5410	4 cm x 10 cm fenestrated sheet
AAS-5460	4 cm x 6 cm sheet	AH-5610	6 cm x 10 cm fenestrated sheet
APS-5480	4 cm x 8 cm sheet	AH-5990	9 cm x 9 cm fenestrated sheet
APS-5212	2 cm x 12 cm sheet	AH-5616	6 cm x 16 cm fenestrated sheet
APS-5410	4 cm x 10 cm sheet	AH-5920	9 cm x 20 cm fenestrated sheet
AU-5760	7 cm x 6 cm sheet		
APS-5610	6 cm x 10 cm sheet		



# AMNIOCORD®

- Dehydrated human umbilical cord allograft
- Provides a protective environment to support the healing process
- Biocompatible ECM and 250+ regulatory proteins<sup>4,5</sup>



ITEM #	SIZE & DESCRIPTION
AC-5230	2 cm x 3 cm sheet
AC-5350	3 cm x 5 cm sheet

# Visual Allograft Sizing Guide

The Visual Allograft Sizing Guide displays various product sizes and dimensions, organized into boxes. Each box contains an icon representing the product's shape and size, along with the item number and dimensions.

- APS-5160**: 16 mm disc
- LS-5230**: 2 cm x 3 cm sheet
- AC-5230**: 2 cm x 3 cm sheet
- APS-5230**: 2 cm x 3 cm sheet
- AAS-5330**: 3 cm x 3 cm sheet
- LS-5350**: 3 cm x 5 cm sheet
- AC-5350**: 3 cm x 5 cm sheet
- LS-5460**: 4 cm x 6 cm sheet
- AAS-5460**: 4 cm x 6 cm sheet
- LS-5440**: 4 cm x 4 cm sheet
- APS-5440**: 4 cm x 4 cm sheet
- APS-5410**: 4 cm x 10 cm sheet
- AH-5410**: 4 cm x 10 cm fenestrated sheet
- APS-5915**: 9 cm x 15 cm sheet
- APS-5260**: 2 cm x 6 cm sheet
- APS-5610**: 6 cm x 10 cm sheet
- AH-5610**: 6 cm x 10 cm fenestrated sheet
- APS-5480**: 4 cm x 8 cm sheet
- AU-5760**: 7 cm x 6 cm sheet
- LS-5212**: 2 cm x 12 cm sheet
- APS-5212**: 2 cm x 12 cm sheet
- LS-5920**: 9 cm x 20 cm sheet
- APS-5920**: 9 cm x 20 cm sheet
- AH-5920**: 9 cm x 20 cm fenestrated sheet
- LS-5616**: 6 cm x 16 cm sheet
- APS-5616**: 6 cm x 16 cm sheet
- AH-5616**: 6 cm x 16 cm fenestrated sheet
- APS-5990**: 9 cm x 9 cm sheet
- AH-5990**: 9 cm x 9 cm fenestrated sheet
- LS-5680**: 6 cm x 8 cm sheet