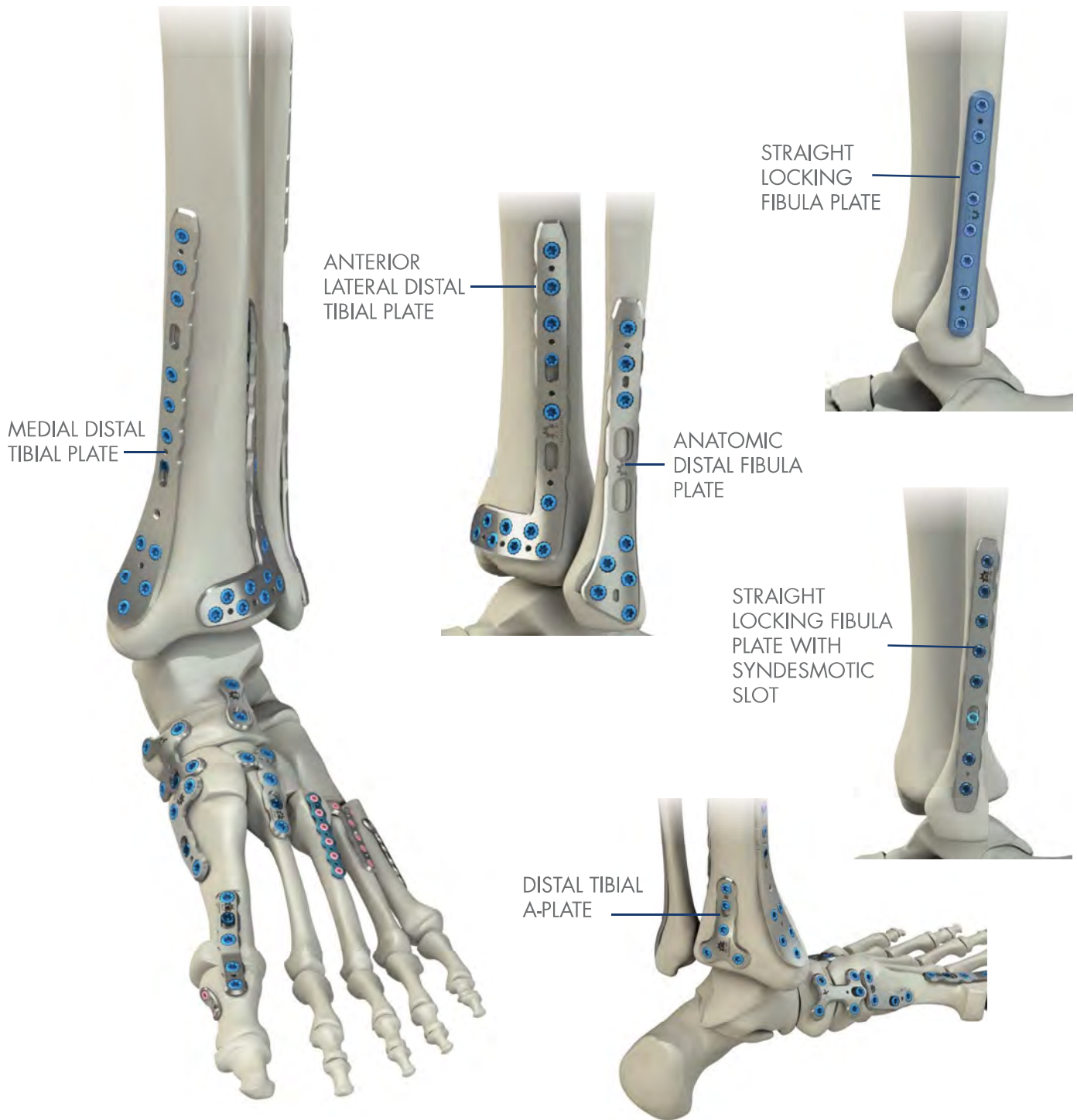


The Flower Foot & Ankle Application



INDICATIONS FOR USE:

The Flower Ankle Plating Set is intended for use for fixation of the ankle in adults and adolescents (12-21) in whom the growth plates have fused, and particularly in osteopenic bone. Specifically,

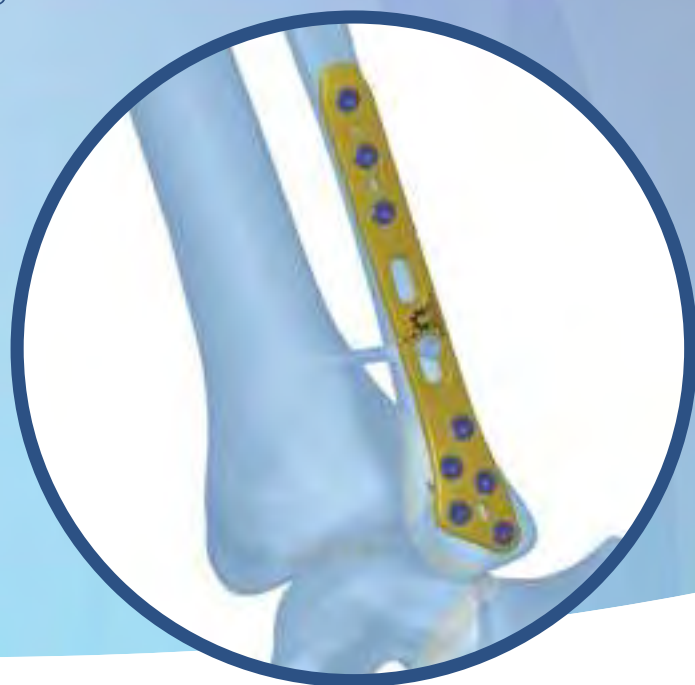
- Distal Medial and Lateral Tibia plates are intended for fixation of osteotomies, fractures, non-unions, and replantations of bones and bone fragments of the diaphyseal and metaphyseal regions of the distal tibia.
- Distal Tibia A-Plates are intended to buttress partial articular fractures and bone fragments of the distal tibia.
- Straight and Distal Lateral Fibula Plates are intended for fixation of osteotomies, fractures, non-unions, mal-unions, and replantations of bones and bone fragments of the diaphyseal and metaphyseal regions on the distal fibula.

READY-FOR-SURGERY™ SOLUTIONS

FIBULA PLATES

Flower fibula plates have a low profile and anatomic contour designed specifically to accommodate the anatomy and pathology of ankle fractures.

Options include straight models as well as an anatomic distal fibula plate with dual syndesmotic slots. These plates can be used with variable angle locking and compression screws, which sit flush within the plate.



STRAIGHT LOCKING FIBULA PLATES

- Anatomically contoured
- Tubular design
- 5, 6, 8, 10 hole lengths
- All locking plates



STRAIGHT LOCKING FIBULA PLATES WITH SYNDESMOTIC SLOT

- Anatomically contoured
- 1/4 tubular design
- 6, 7, 8 hole lengths
- Syndesmotic slot accommodates screw and suture based fixation



ANATOMIC DISTAL FIBULA PLATE

- Anatomically contoured
- Dual syndesmotic slots accommodate screw and suture based fixation
- • Low profile head
- • Left/right and 5, 7 hole lengths



The Flower Anatomic Distal Fibula – Product Rationale

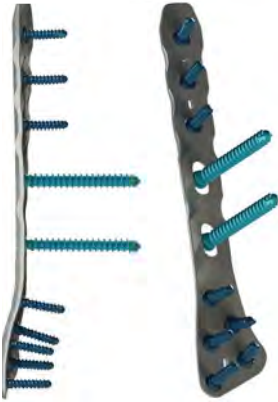
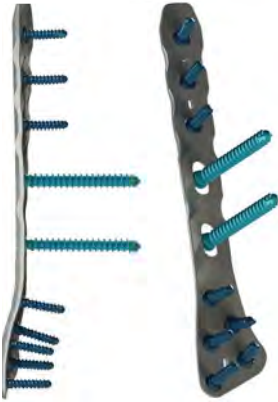




The Flower Anatomic Distal Fibula Plate is a low profile stabilization plate designed to best accommodate biomechanical considerations of the distal fibula.

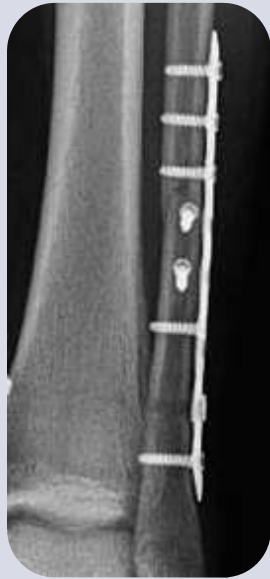
The Flower Anatomic Distal Fibula Plate allows for the use of variable angle locking and compression screws that both sit flush within the plate.

The dual slots in the plate are designed to accommodate variable placement of syndesmotic fixation, when required. The plate is also compatible with titanium endo buttons if flexible syndesmotic fixation is desired.

The Flower Anatomic Distal Fibula Plate – Design Features

| | PLATE RATIONALE | SURGICAL BENEFIT |
|---|---|---|
|  | Dual syndesmotic slots | Allows variable placement of the syndesmotic fixation & recess allowing suture buttons to sit flush |
|  | Anatomic curvature | Ideal anatomic fit distally and along the fibular shaft |
|  | Anatomic low profile plate (1.8mm at the head) | Minimizes plate prominence reducing potential soft tissue irritation |
|  | Patented Flower locking mechanism features variable angle locking screw holes allowing +/- 15° of freedom | Screws sit flush in the locking holes |

The Flower Straight Fibula Plate – Product Rationale





Flower offers two straight fibula plate designs; straight all locking plates and locking plates with syndesmotomic slot.

The Flower Straight Fibula Plates allow for the use of variable angle locking and compression screws. The slot in the locking plate with syndesmotomic slots is designed to accommodate variable placement of syndesmotomic fixation, when required. The plate is compatible with titanium endo buttons if flexible syndesmotomic fixation is desired.

It is recommended to use the Flower Straight Fibula Plate in combination with a 3.5mm compression screw to lag the fracture outside of the plate.

The Flower Straight Fibula Plate – Design Features

| | PLATE RATIONALE | SURGICAL BENEFIT |
|---|---|--|
|  | Plates are available in 5, 6, 7, 8 and 10 hole configurations | Multiple surgical options |
| | Straight Locking Fibula Plate with Syndesmotomic Slot | Allows for variable placement of syndesmotomic fixation |
|  | Plate accepts 2.7mm, 3.0mm and 3.5mm locking screws & 2.7mm, 3.5mm and 4.0mm compression screws | Provides multiple screw options for intraoperative fracture management |
| | Anatomic, low-profile plate | Minimizes plate prominence reducing potential soft tissue irritation |

READY-FOR-SURGERY™ SOLUTIONS

TIBIA PLATES

Flower tibia plates have a robust, anatomically-contoured design with ideal accommodation for the anatomy and pathology of complex tibia fractures.

The locking holes in the Flower tibia plates allow for variable angle placement within a 30° cone and accept both locking and non-locking screws.



ANTERIOR LATERAL DISTAL TIBIAL PLATE

- Holes: 7, 10
- Orientation: Left, Right
- Distal holes provide articular support and treat comminuted fractures



MEDIAL DISTAL TIBIAL PLATE

- Holes: 8, 10
- Orientation: Left, Right
- Pre-packaged with MIS insertion post for minimally invasive techniques limited incision techniques



DISTAL TIBIA A-PLATE

- Holes: 5
- Anterior or posterior placement

