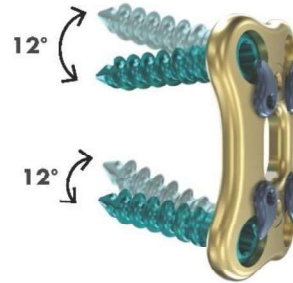
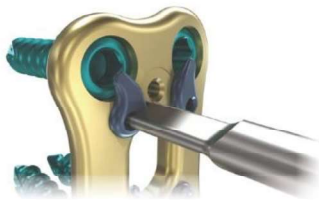


ACCUFIT® ALIF PLATE SYSTEM



- Low Profile Design (3.8mm) reduces tissue disruption.
- Pre-Lordosed L5-S1 Plate contours to sacral anatomy to reduce vascular complications.

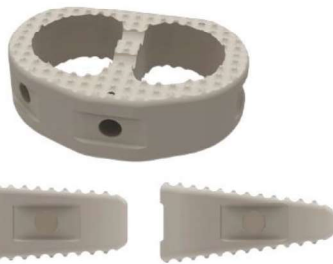
- Large Graft Window allows for excellent visualization of interbody and endplates.



- Intuitive Single Step Locking Mechanism is designed to facilitate secure placement of the plate.

- Fixed and Variable Screws available to accommodate surgeon preference.

PRECISION SPINE
SHURFIT®
ALIF INTERBODY CAGES



- 3 Points of Insertion facilitate anterior, anterolateral and direct lateral insertion.
- Anatomical Shape & Central Strut provides a large surface area for anterior column support.
- Large Graft Windows allow for a large volume of biological ingrowth.

Variable Ø5.0mm



Fixed Ø5.0mm



Variable Ø5.5mm



Fixed Ø5.5mm



SIZING:

- Widths – 26, 32 & 39mm
- Heights – 9 to 21mm (2mm increments)
- Lordosis – 8° & 15°

AccuFit Implant Sizing

Plate Lengths (end to end)	Variable & Fixed Screws	Screw Lengths	Screw Diameters
21mm	5.0mm – 12° Cone	25mm	5.0mm
23mm	5.5mm – 6° Cone	30mm	5.5mm
25mm		35mm	
27mm			

Precision Spine, Inc.

2050 Executive Drive, Pearl, MS 39208

Customer Service: 1.888.241.4773

Phone: 601.420.4244

Toll Free: 877.780.4370

Fax: 601.420.5501

www.precisionspineinc.com



CE2797